

Elk Lake Dr between Royal Oak Dr and Commonwealth Pl

April 01, 2019 To April 05, 2019



The data presented here is for information purposes only and should not be considered authoritative for construction, geotechnical, engineering, navigational, legal, or other site-specific uses. The information shared is owned by the Transportation Division of the Engineering Department at the District of Saanich. Accuracy is not guaranteed.

Start Date: 1-Apr-19
 Start Time: 0:02
 Station ID: C0022-03

Location 1: Elk Lake Dr between Royal Oak Dr and Commonwealth PI

Note: Royal Oak Dr and Commonwealth PI

DATE:	April 1, 2019		April 2, 2019		April 3, 2019		April 4, 2019		April 5, 2019		WK AVG		WK AVG	HOURLY
	MON		TUE		WED		THURS		FRI				CH 1+2	%
Time:	NB	SB	NB	SB	NB	SB	NB	SB	NB	SB	NB	SB		
12-1 AM			8	14	8	15	10	19			9	16	25	0.2%
1-2 AM			3	2	4	6	2	3			3	4	7	0.1%
2-3 AM			7	2	2	3	3	2			4	2	6	0.1%
3-4 AM			3	7	4	3	5	2			4	4	8	0.1%
4-5 AM			21	11	18	13	26	16			22	13	35	0.3%
5-6 AM			112	65	96	36	115	48			108	50	157	1.4%
6-7 AM			127	142	118	119	114	121			120	127	247	2.2%
7-8 AM			211	292	184	294	212	278			202	288	490	4.3%
8-9 AM			333	418	363	419	327	403			341	413	754	6.6%
9-10 AM			398	401	398	410	362	398			386	403	789	6.9%
10-11 AM			301	456	342	464	339	451			327	457	784	6.8%
11-12 PM			376	457	372	496	329	451			359	468	827	7.2%
12-1 PM			334	390	360	458	300	439			331	429	760	6.6%
1-2 PM			331	440	373	453	326	420			343	438	781	6.8%
2-3 PM			316	411	313	415	310	373			313	400	713	6.2%
3-4 PM			453	488	518	551	493	524			488	521	1009	8.8%
4-5 PM			463	451	480	428	445	422			463	434	896	7.8%
5-6 PM			503	460	468	477	473	504			481	480	962	8.4%
6-7 PM			359	431	345	359	315	388			340	393	732	6.4%
7-8 PM			274	343	232	387	258	411			255	380	635	5.5%
8-9 PM			181	249	161	225	178	223			173	232	406	3.5%
9-10 PM			65	162	124	173	107	163			99	166	265	2.3%
10-11 PM			41	110	40	74	41	78			41	87	128	1.1%
11-12 AM			19	33	22	22	25	30			22	28	50	0.4%
LANES			5239	6235	5345	6300	5115	6167			5233	6234	11467	100.0%
TOTAL			11474		11645		11282				11470			
	MON		TUE		WED		THURS		FRI		WK AVG			

PEAK HOUR					TOTAL VEHICALS-PEAK PERIODS		2 HOUR PEAK INTERVALS				
MAX. 7 - 9 am PEAK HOUR	754	⇒	6.6%	between 8-9 AM	4690	⇒	6 HR TOTAL	2 HR AM (7 - 9 AM)			
MAX. 7 - 11 am PEAK HOUR	789	⇒	6.9%	between 9-10 AM	3103	⇒	4 HR TOTAL	VEH / HR	VEH / 2HR	2 HR %	
								7-8 AM	490	1245	10.9%
								8-9 AM	754		
MAX. 11 am - 1 pm PEAK HOUR	827	⇒	7.2%	between 11-12 PM	24 HOUR FACTORS						
MAX. 11 am - 3 pm PEAK HOUR	827	⇒	7.2%	between 11-12 PM							
MAX. 4 - 6 pm PEAK HOUR	962	⇒	8.4%	between 5-6 PM							
MAX. 3 - 6 pm PEAK HOUR	1009	⇒	8.8%	between 3-4 PM	2.44	⇒	6-24 HR FACT.	2 HR NOON (11 - 1 PM)			
					3.70	⇒	4-24 HR FACT.	VEH / HR	VEH / 2HR	2 HR %	
								11-12 PM	827	1587	13.8%
								12-1 PM	760		
								2 HR PM (4 - 6 PM)			
								VEH / HR	VEH / 2HR	2 HR %	
								4-5 PM	896	1858	16.2%
								5-6 PM	962		

Elk Lake Dr between Royal Oak Dr and Commonwealth PI

Northbound

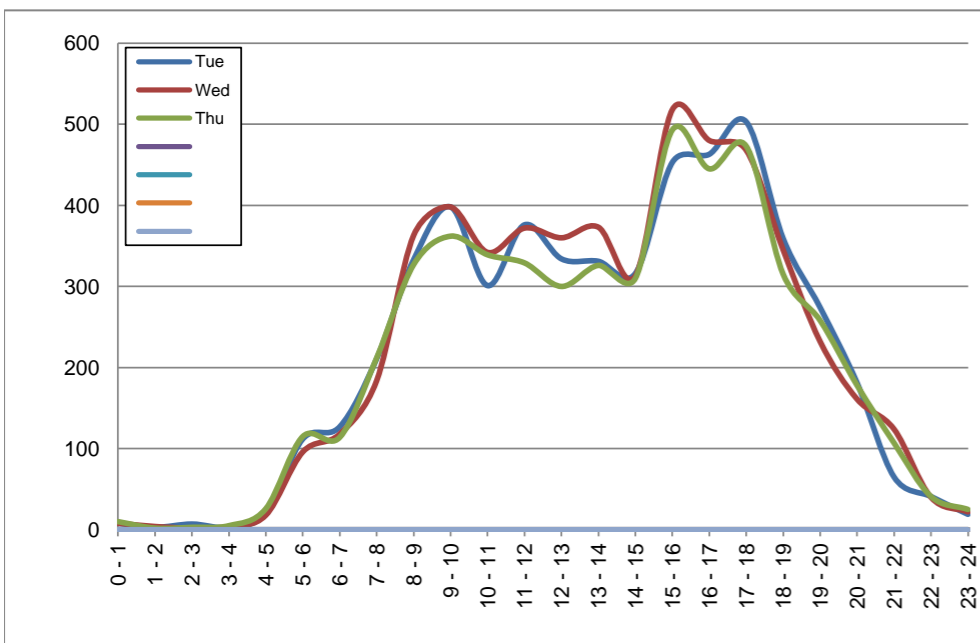
April 2, 2019 to April 4, 2019

Hourly Volumes

Time Period	Tue	Wed	Thu			
	Apr 2	Apr 3	Apr 4			
0 - 1	8	8	10			
1 - 2	3	4	2			
2 - 3	7	2	3			
3 - 4	3	4	5			
4 - 5	21	18	26			
5 - 6	112	96	115			
6 - 7	127	118	114			
7 - 8	211	184	212			
8 - 9	333	363	327			
9 - 10	398	398	362			
10 - 11	301	342	339			
11 - 12	376	372	329			
12 - 13	334	360	300			
13 - 14	331	373	326			
14 - 15	316	313	310			
15 - 16	453	518	493			
16 - 17	463	480	445			
17 - 18	503	468	473			
18 - 19	359	345	315			
19 - 20	274	232	258			
20 - 21	181	161	178			
21 - 22	65	124	107			
22 - 23	41	40	41			
23 - 24	19	22	25			
Day Total	5239	5345	5115			

15-Minute Volumes

Time Start	Tue	Wed	Thu				Time Start	Tue	Wed	Thu			
	Apr 2	Apr 3	Apr 4					Apr 2	Apr 3	Apr 4			
0:00	4	3	5				12:00	82	110	71			
0:15	4	1	4				12:15	86	78	82			
0:30	0	1	1				12:30	80	79	65			
0:45	0	3	0				12:45	86	93	82			
1:00	1	1	1				13:00	99	97	99			
1:15	1	1	1				13:15	75	94	56			
1:30	0	1	0				13:30	84	87	97			
1:45	1	1	0				13:45	73	95	74			
2:00	1	0	0				14:00	89	89	83			
2:15	2	1	1				14:15	79	64	78			
2:30	0	0	1				14:30	74	75	78			
2:45	4	1	1				14:45	74	85	71			
3:00	0	0	1				15:00	89	98	88			
3:15	2	4	2				15:15	122	129	135			
3:30	1	0	1				15:30	117	143	129			
3:45	0	0	1				15:45	125	148	141			
4:00	3	0	3				16:00	115	111	124			
4:15	2	0	6				16:15	113	138	115			
4:30	5	6	3				16:30	117	108	96			
4:45	11	12	14				16:45	118	123	110			
5:00	35	22	23				17:00	138	101	120			
5:15	30	27	27				17:15	135	111	137			
5:30	21	17	30				17:30	113	117	110			
5:45	26	30	35				17:45	117	139	106			
6:00	22	23	21				18:00	75	98	86			
6:15	32	28	31				18:15	110	104	83			
6:30	25	28	25				18:30	91	63	73			
6:45	48	39	37				18:45	83	80	73			
7:00	47	27	39				19:00	76	63	69			
7:15	51	43	57				19:15	70	61	87			
7:30	59	46	38				19:30	66	43	51			
7:45	54	68	78				19:45	62	65	51			
8:00	57	52	62				20:00	51	57	50			
8:15	63	80	62				20:15	39	51	40			
8:30	80	96	94				20:30	53	24	41			
8:45	133	135	109				20:45	38	29	47			
9:00	109	121	105				21:00	17	38	39			
9:15	92	88	95				21:15	19	36	31			
9:30	74	92	67				21:30	13	26	21			
9:45	123	97	95				21:45	16	24	16			
10:00	89	103	79				22:00	9	17	11			
10:15	61	78	101				22:15	16	13	10			
10:30	71	73	67				22:30	10	6	12			
10:45	80	88	92				22:45	6	4	8			
11:00	90	83	74				23:00	7	6	4			
11:15	96	79	72				23:15	6	8	8			
11:30	109	99	89				23:30	4	5	5			
11:45	81	111	94				23:45	2	3	8			



Site notes:

Elk Lake Dr between Royal Oak Dr and Commonwealth PI

Southbound

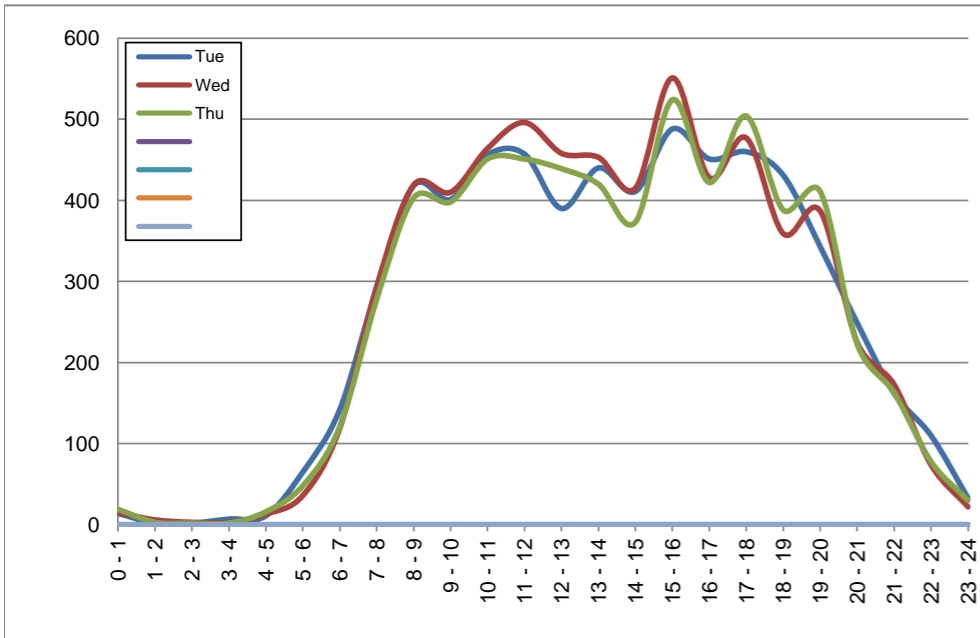
April 2, 2019 to April 4, 2019

Hourly Volumes

Time Period	Tue	Wed	Thu			
	Apr 2	Apr 3	Apr 4			
0 - 1	14	15	19			
1 - 2	2	6	3			
2 - 3	2	3	2			
3 - 4	7	3	2			
4 - 5	11	13	16			
5 - 6	65	36	48			
6 - 7	142	119	121			
7 - 8	292	294	278			
8 - 9	418	419	403			
9 - 10	401	410	398			
10 - 11	456	464	451			
11 - 12	457	496	451			
12 - 13	390	458	439			
13 - 14	440	453	420			
14 - 15	411	415	373			
15 - 16	488	551	524			
16 - 17	451	428	422			
17 - 18	460	477	504			
18 - 19	431	359	388			
19 - 20	343	387	411			
20 - 21	249	225	223			
21 - 22	162	173	163			
22 - 23	110	74	78			
23 - 24	33	22	30			
Day Total	6235	6300	6167			

15-Minute Volumes

Time Start	Tue	Wed	Thu				Time Start	Tue	Wed	Thu			
	Apr 2	Apr 3	Apr 4					Apr 2	Apr 3	Apr 4			
0:00	3	6	9				12:00	92	144	124			
0:15	7	3	3				12:15	100	103	99			
0:30	2	2	3				12:30	96	108	113			
0:45	2	4	4				12:45	102	103	103			
1:00	0	2	0				13:00	99	96	117			
1:15	0	0	0				13:15	138	108	105			
1:30	1	2	1				13:30	93	151	103			
1:45	1	2	2				13:45	110	98	95			
2:00	1	2	0				14:00	106	89	83			
2:15	0	0	2				14:15	101	117	101			
2:30	1	1	0				14:30	100	86	83			
2:45	0	0	0				14:45	104	123	106			
3:00	1	0	1				15:00	111	160	138			
3:15	3	1	1				15:15	126	132	104			
3:30	1	1	0				15:30	125	140	142			
3:45	2	1	0				15:45	126	119	140			
4:00	0	2	0				16:00	111	126	129			
4:15	2	2	6				16:15	110	94	110			
4:30	4	2	4				16:30	116	106	91			
4:45	5	7	6				16:45	114	102	92			
5:00	18	6	11				17:00	103	122	130			
5:15	15	4	5				17:15	123	97	141			
5:30	10	8	14				17:30	115	108	130			
5:45	22	18	18				17:45	119	150	103			
6:00	24	29	25				18:00	100	86	95			
6:15	31	28	20				18:15	123	106	94			
6:30	42	27	37				18:30	97	84	89			
6:45	45	35	39				18:45	111	83	110			
7:00	39	59	37				19:00	97	111	151			
7:15	79	54	62				19:15	72	110	84			
7:30	75	89	76				19:30	114	79	106			
7:45	99	92	103				19:45	60	87	70			
8:00	88	85	92				20:00	75	63	65			
8:15	83	108	84				20:15	71	54	58			
8:30	122	107	111				20:30	55	59	52			
8:45	125	119	116				20:45	48	49	48			
9:00	116	117	108				21:00	52	54	54			
9:15	90	99	95				21:15	47	42	58			
9:30	104	94	93				21:30	38	45	28			
9:45	91	100	102				21:45	25	32	23			
10:00	98	131	110				22:00	64	34	42			
10:15	111	104	102				22:15	20	20	17			
10:30	111	103	120				22:30	11	11	10			
10:45	136	126	119				22:45	15	9	9			
11:00	119	133	114				23:00	14	6	8			
11:15	143	117	130				23:15	3	7	6			
11:30	106	121	125				23:30	13	6	9			
11:45	89	125	82				23:45	3	3	7			



Site notes:

Vehicle Speed Summary

Saanich Engineering Department

Count Id: C0022-03

Filename: Elk Lake Dr between Royal Oak Dr and Commonwealth PI-Apr-2019.xlsm

Location: Elk Lake Dr between Royal Oak Dr and Commonwealth PI

Note: Royal Oak Dr and Commonwealth PI

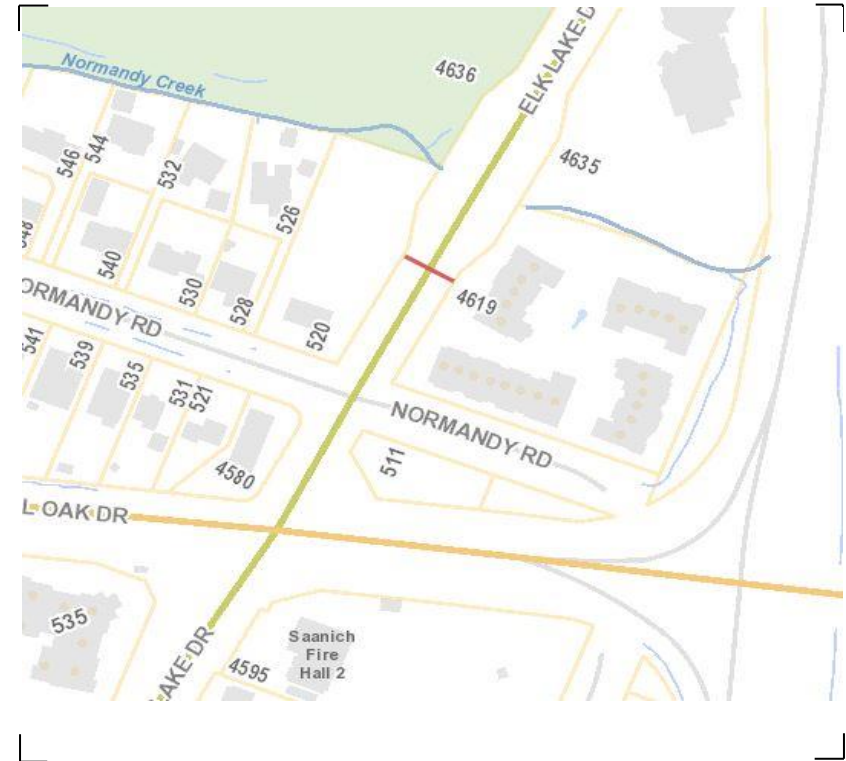
Direction: **North-South**

Dates: **April 01, 2019 To April 05, 2019**

Filtered data

AVG. SPEED	29 mph	46 km/h
50 % SPEED	29 mph	46 km/h
85 % SPEED	33 mph	53 km/h
95 % SPEED	36 mph	58 km/h

Location Map



Elk Lake Dr between Royal Oak Dr and Commonwealth PI

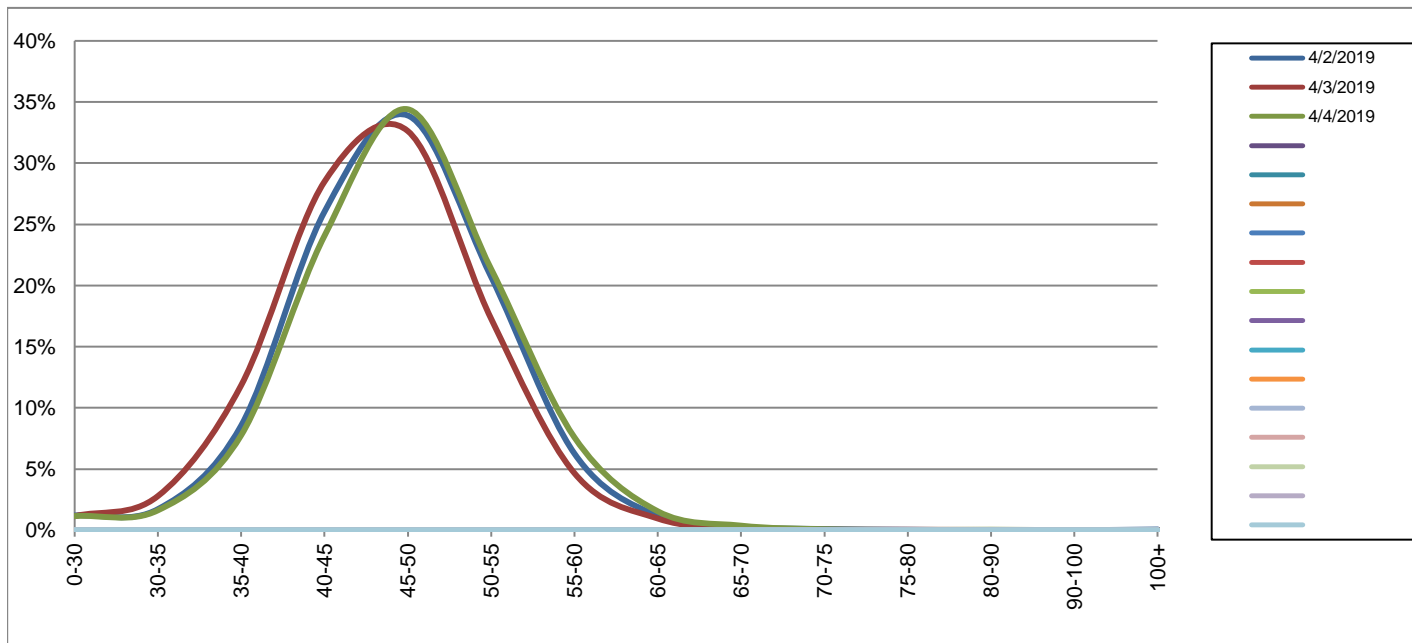
Northbound

April 2, 2019 to April 4, 2019

Daily Speed Bin Percentages															Daily Speed Bin Volumes														Total	Avg.
Bin #	1	2	3	4	5	6	7	8	9	10	11	12	13	14	1	2	3	4	5	6	7	8	9	10	11	12	13	14	Volume	Speed
Bin Speeds	0-30	30-35	35-40	40-45	45-50	50-55	55-60	60-65	65-70	70-75	75-80	80-90	90-100	100+	0-30	30-35	35-40	40-45	45-50	50-55	55-60	60-65	65-70	70-75	75-80	80-90	90-100	100+		
4/2/2019	1.2%	1.7%	8.6%	26.0%	33.9%	20.7%	6.3%	1.2%	0.3%	0.1%	0.0%	0.0%	0.0%	0.1%	63	90	448	1364	1776	1085	328	61	14	5	2	0	0	3	5239	47
4/3/2019	1.1%	2.8%	11.8%	28.5%	32.6%	17.3%	4.7%	1.0%	0.1%	0.0%	0.0%	0.0%	0.0%	0.0%	61	149	633	1523	1744	924	249	51	5	2	2	1	1	0	5345	46
4/4/2019	1.2%	1.6%	7.8%	24.1%	34.4%	21.3%	7.6%	1.5%	0.4%	0.1%	0.0%	0.0%	0.0%	0.0%	59	83	397	1231	1760	1092	388	79	19	4	1	2	0	0	5115	47
Total	1.2%	2.1%	9.4%	26.2%	33.6%	19.8%	6.1%	1.2%	0.2%	0.1%	0.0%	0.0%	0.0%	0.0%	183	322	1478	4118	5280	3101	965	191	38	11	5	3	1	3	15699	46

Speed Data Summary

Bin #	1	2	3	4	5	6	7	8	9	10	11	12	13	14	Total
Bin Speeds	0-30	30-35	35-40	40-45	45-50	50-55	55-60	60-65	65-70	70-75	75-80	80-90	90-100	100+	
Survey Total	183	322	1478	4118	5280	3101	965	191	38	11	5	3	1	3	15699
% Total	1.2%	2.1%	9.4%	26.2%	33.6%	19.8%	6.1%	1.2%	0.2%	0.1%	0.0%	0.0%	0.0%	0.0%	100%
Accumulated %	1.2%	3.2%	12.6%	38.9%	72.5%	92.2%	98.4%	99.6%	99.9%	99.9%	100.0%	100.0%	100.0%	100%	
Inverse Accum. %	98.8%	96.8%	87.4%	61.1%	27.5%	7.8%	1.6%	0.4%	0.1%	0.1%	0.0%	0.0%	0.0%	0.0%	
Average Speed	46 KM/H														



Site notes:

Elk Lake Dr between Royal Oak Dr and Commonwealth PI

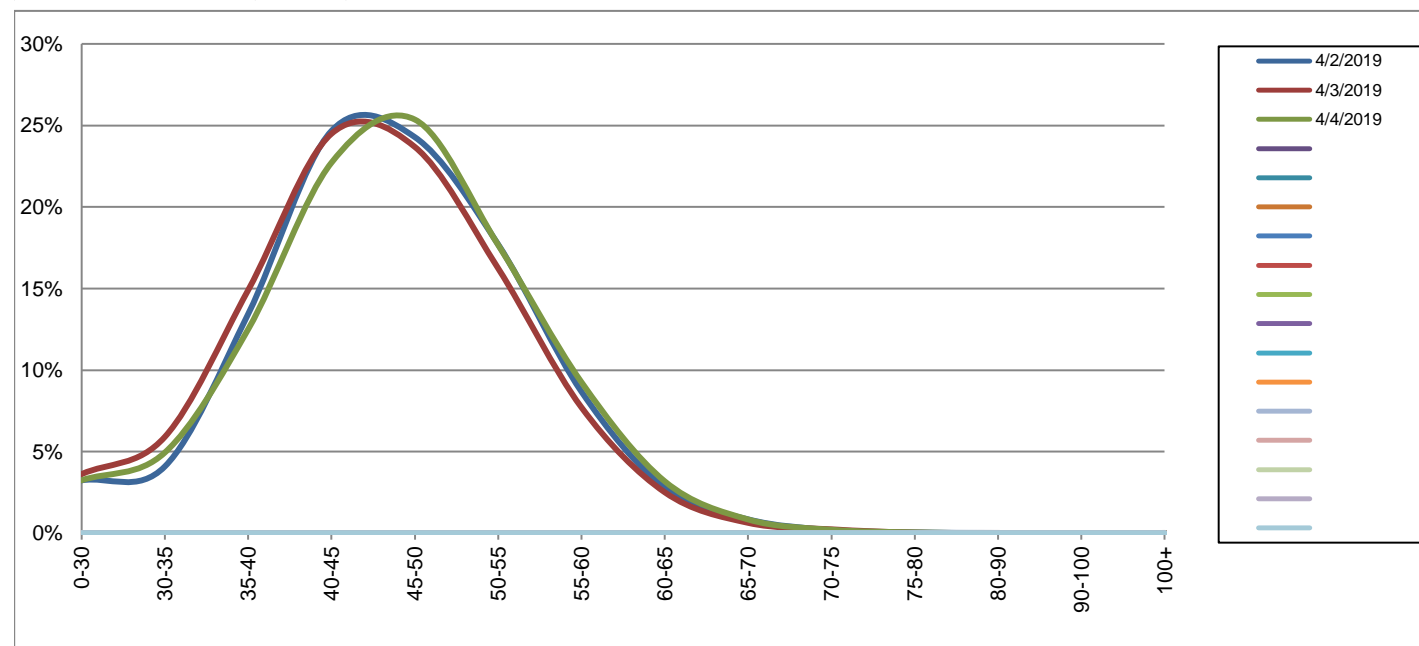
Southbound

April 2, 2019 to April 4, 2019

Daily Speed Bin Percentages															Daily Speed Bin Volumes														Total	Avg.
Bin #	1	2	3	4	5	6	7	8	9	10	11	12	13	14	1	2	3	4	5	6	7	8	9	10	11	12	13	14	Volume	Speed
Bin Speeds	0-30	30-35	35-40	40-45	45-50	50-55	55-60	60-65	65-70	70-75	75-80	80-90	90-100	100+	0-30	30-35	35-40	40-45	45-50	50-55	55-60	60-65	65-70	70-75	75-80	80-90	90-100	100+		
4/2/2019	3.2%	4.1%	13.4%	24.7%	24.3%	17.7%	8.7%	2.8%	0.9%	0.2%	0.0%	0.0%	0.0%	0.0%	202	255	838	1538	1514	1104	541	174	53	12	3	1	0	0	6235	46
4/3/2019	3.6%	5.9%	14.9%	24.5%	23.7%	16.2%	7.7%	2.5%	0.6%	0.2%	0.0%	0.0%	0.0%	0.0%	228	372	939	1543	1492	1023	486	158	40	15	2	1	0	1	6300	45
4/4/2019	3.2%	4.9%	12.5%	22.7%	25.4%	17.7%	9.3%	3.2%	0.8%	0.2%	0.0%	0.0%	0.0%	0.0%	200	305	771	1401	1564	1090	571	196	52	13	3	0	0	1	6167	46
Total	3.4%	5.0%	13.6%	24.0%	24.4%	17.2%	8.5%	2.8%	0.8%	0.2%	0.0%	0.0%	0.0%	0.0%	630	932	2548	4482	4570	3217	1598	528	145	40	8	2	0	2	18702	45

Speed Data Summary

Bin #	1	2	3	4	5	6	7	8	9	10	11	12	13	14	Total
Bin Speeds	0-30	30-35	35-40	40-45	45-50	50-55	55-60	60-65	65-70	70-75	75-80	80-90	90-100	100+	
Survey Total	630	932	2548	4482	4570	3217	1598	528	145	40	8	2	0	2	18702
% Total	3.4%	5.0%	13.6%	24.0%	24.4%	17.2%	8.5%	2.8%	0.8%	0.2%	0.0%	0.0%	0.0%	0.0%	100%
Accumulated %	3.4%	8.4%	22.0%	45.9%	70.4%	87.6%	96.1%	98.9%	99.7%	99.9%	100.0%	100.0%	100.0%	100%	
Inverse Accum. %	96.6%	91.6%	78.0%	54.1%	29.6%	12.4%	3.9%	1.1%	0.3%	0.1%	0.0%	0.0%	0.0%	0.0%	
Average Speed	45 KM/H														



Site notes:

Elk Lake Dr between Royal Oak Dr and Commonwealth PI

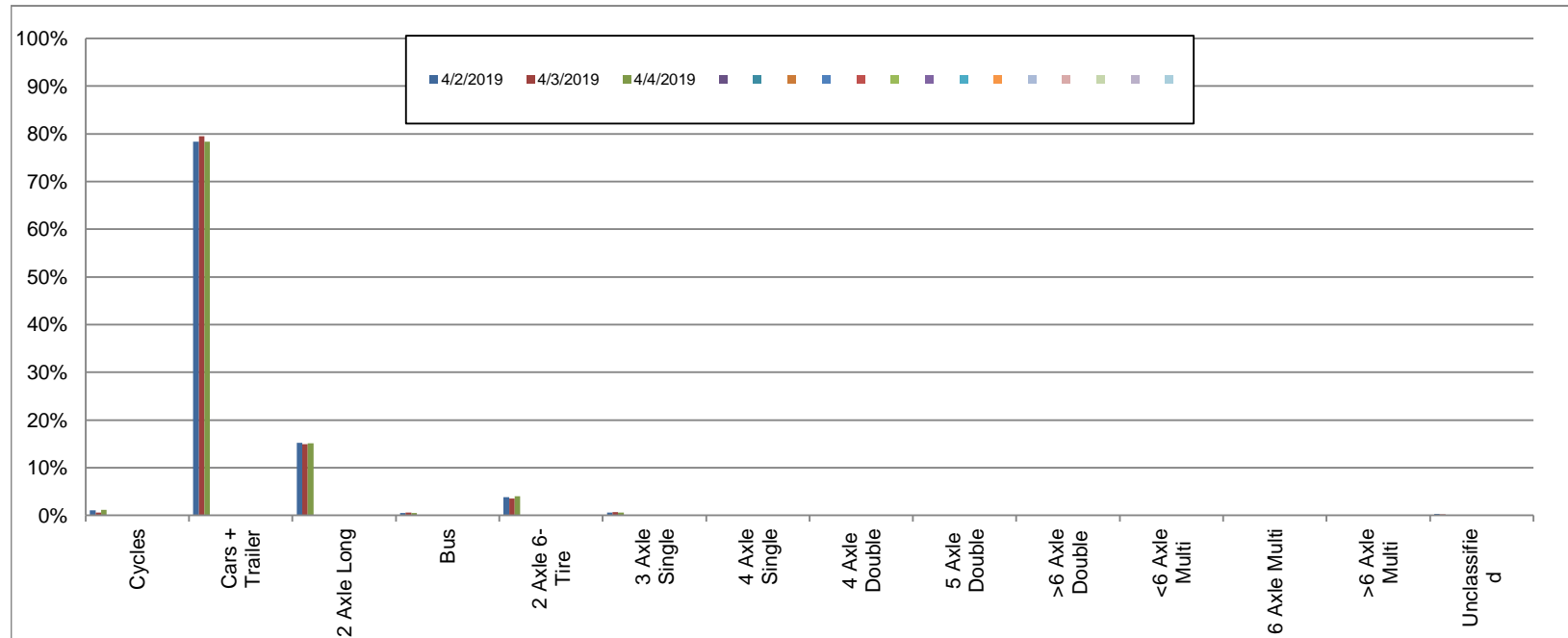
Northbound

April 2, 2019 to April 4, 2019

Daily Class Bin Percentages															Daily Class Bin Volumes															
Bin #	1	2	3	4	5	6	7	8	9	10	11	12	13	14	1	2	3	4	5	6	7	8	9	10	11	12	13	14	Total Volume	
Bin Class	Cycles	Cars + Trailer	2 Axle Long	Bus	2 Axle 6-Tire	3 Axle Single	4 Axle Single	4 Axle Double	5 Axle Double	>6 Axle Double	<6 Axle Multi	6 Axle Multi	>6 Axle Multi	Unclassified	Cycles	Cars + Trailer	2 Axle Long	Bus	2 Axle 6-Tire	3 Axle Single	4 Axle Single	4 Axle Double	5 Axle Double	>6 Axle Double	<6 Axle Multi	6 Axle Multi	>6 Axle Multi	Unclassified		
4/2/2019	1.1%	78.4%	15.3%	0.5%	3.8%	0.6%	0.0%	0.1%	0.0%	0.0%	0.0%	0.0%	0.0%	0.3%	57	4107	799	25	199	32	0	6	0	0	0	0	0	0	14	5239
4/3/2019	0.6%	79.5%	14.9%	0.6%	3.5%	0.6%	0.0%	0.1%	0.0%	0.0%	0.0%	0.0%	0.0%	0.2%	33	4248	797	30	187	34	0	5	0	0	0	0	0	0	11	5345
4/4/2019	1.2%	78.4%	15.1%	0.5%	4.0%	0.6%	0.0%	0.1%	0.0%	0.0%	0.0%	0.0%	0.0%	0.1%	59	4009	771	24	204	31	1	7	2	0	0	0	0	7	5115	
Total	0.9%	78.8%	15.1%	0.5%	3.8%	0.6%	0.0%	0.1%	0.0%	0.0%	0.0%	0.0%	0.0%	0.2%	149	12364	2367	79	590	97	1	18	2	0	0	0	0	32	15699	

Class Data Summary

Bin #	1	2	3	4	5	6	7	8	9	10	11	12	13	14	Total Volume
Bin Class	Cycles	Cars + Trailer	2 Axle Long	Bus	2 Axle 6-Tire	3 Axle Single	4 Axle Single	4 Axle Double	5 Axle Double	>6 Axle Double	<6 Axle Multi	6 Axle Multi	>6 Axle Multi	Unclassified	Total Volume
Survey Total	149	12364	2367	79	590	97	1	18	2	0	0	0	0	32	15699
% Total	0.9%	78.8%	15.1%	0.5%	3.8%	0.6%	0.0%	0.1%	0.0%	0.0%	0.0%	0.0%	0.0%	0.2%	100%
Accumulated %	0.9%	79.7%	94.8%	95.3%	99.0%	99.7%	99.7%	99.8%	99.8%	99.8%	99.8%	99.8%	99.8%	100.0%	
Inv. Accum. %	99.1%	20.3%	5.2%	4.7%	1.0%	0.3%	0.3%	0.2%	0.2%	0.2%	0.2%	0.2%	0.2%	0.0%	



Classification Descriptions

Bin #	Bin Description
1	Motorcycles
2	Passenger cars, including those with recreational trailers
3	2-axle pick-ups, vans, and RVs, including those with recreational trailers
4	Buses
5	2-axle, 6-tire single units
6	3-axle single units
7	4-axle single units
8	3-axle or 4-axle double unit
9	5-axle double unit
10	6-, 7-, or 8-axle double unit
11	5-axle multiple unit
12	6-axle multiple unit
13	7-or-more-axle multiple unit
14	Vehicles that could not be classified

Site notes:

Elk Lake Dr between Royal Oak Dr and Commonwealth PI

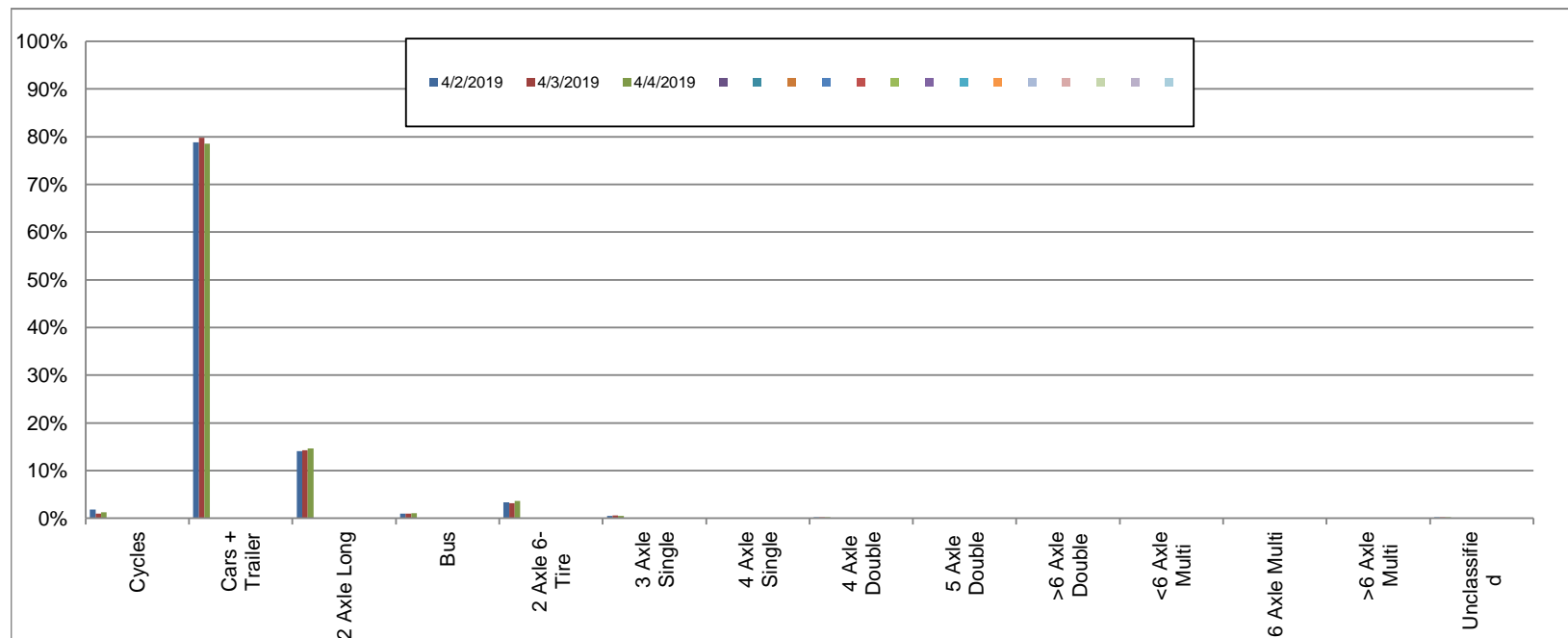
Southbound

April 2, 2019 to April 4, 2019

Daily Class Bin Percentages															Daily Class Bin Volumes											Total Volume			
Bin #	1	2	3	4	5	6	7	8	9	10	11	12	13	14	1	2	3	4	5	6	7	8	9	10	11		12	13	14
Bin Class	Cycles	Cars + Trailer	2 Axle Long	Bus	2 Axle 6-Tire	3 Axle Single	4 Axle Single	4 Axle Double	5 Axle Double	>6 Axle Double	<6 Axle Multi	6 Axle Multi	>6 Axle Multi	Unclassified	Cycles	Cars + Trailer	2 Axle Long	Bus	2 Axle 6-Tire	3 Axle Single	4 Axle Single	4 Axle Double	5 Axle Double	>6 Axle Double	<6 Axle Multi	6 Axle Multi	>6 Axle Multi	Unclassified	
4/2/2019	1.8%	78.9%	14.1%	1.0%	3.3%	0.5%	0.0%	0.2%	0.0%	0.0%	0.0%	0.0%	0.0%	0.2%	113	4917	878	63	208	30	1	12	0	1	0	0	0	12	6235
4/3/2019	0.9%	79.8%	14.3%	1.0%	3.1%	0.6%	0.0%	0.2%	0.0%	0.0%	0.0%	0.0%	0.0%	0.2%	58	5025	899	63	197	35	0	11	0	1	0	0	0	11	6300
4/4/2019	1.3%	78.6%	14.7%	1.1%	3.6%	0.5%	0.0%	0.2%	0.0%	0.0%	0.0%	0.0%	0.0%	0.2%	78	4845	904	65	221	28	1	10	2	0	0	0	0	13	6167
Total	1.3%	79.1%	14.3%	1.0%	3.3%	0.5%	0.0%	0.2%	0.0%	0.0%	0.0%	0.0%	0.0%	0.2%	249	14787	2681	191	626	93	2	33	2	2	0	0	0	36	18702

Class Data Summary

Bin #	1	2	3	4	5	6	7	8	9	10	11	12	13	14	Total Volume
Bin Class	Cycles	Cars + Trailer	2 Axle Long	Bus	2 Axle 6-Tire	3 Axle Single	4 Axle Single	4 Axle Double	5 Axle Double	>6 Axle Double	<6 Axle Multi	6 Axle Multi	>6 Axle Multi	Unclassified	Total Volume
Survey Total	249	14787	2681	191	626	93	2	33	2	2	0	0	0	36	18702
% Total	1.3%	79.1%	14.3%	1.0%	3.3%	0.5%	0.0%	0.2%	0.0%	0.0%	0.0%	0.0%	0.0%	0.2%	100%
Accumulated %	1.3%	80.4%	94.7%	95.8%	99.1%	99.6%	99.6%	99.8%	99.8%	99.8%	99.8%	99.8%	99.8%	100.0%	
Inv. Accum. %	98.7%	19.6%	5.3%	4.2%	0.9%	0.4%	0.4%	0.2%	0.2%	0.2%	0.2%	0.2%	0.2%	0.0%	



Classification Descriptions

Bin #	Bin Description
1	Motorcycles
2	Passenger cars, including those with recreational trailers
3	2-axle pick-ups, vans, and RVs, including those with recreational trailers
4	Buses
5	2-axle, 6-tire single units
6	3-axle single units
7	4-axle single units
8	3-axle or 4-axle double unit
9	5-axle double unit
10	6-, 7-, or 8-axle double unit
11	5-axle multiple unit
12	6-axle multiple unit
13	7-or-more-axle multiple unit
14	Vehicles that could not be classified

Site notes: